

MET-KIT[®]

BUDGET KIT HOMES

Now, anyone can build![™]



You can build your own home, guaranteed!

Met-Kit's framing system enables you to build your own home

Met-Kit Homes provide a simple, bolt together, steel frame system ideal for the owner builder.

We supply a complete kit home package. This includes all building materials, your kitchen, laundry and bathroom, all fittings, insulation, tiles, paint, electrical and plumbing kits, even a set of tools!

With our unique framing system – and comprehensive instruction manual – it's never been easier to build, or manage the build of your own home.

Met-Kit has an attractive, well planned range of 3, 4 and 5 bedroom budget homes backed by PAAL's 50 years kit home experience. Quality homes for people who want a fully flexible, easy-to-build steel frame kit home at an affordable price.



... and you'll be confident with the Met-Kit product Guarantee

We guarantee that each Met-Kit Kit Home can be built by following our detailed instructions.

We further guarantee that all components of our product will be supplied complete and free from defects.

a **PAAL** company



MET-KIT HOMES Pty Ltd ABN 83 106 127 931 DISTRIBUTED BY PAAL HOMES

Met-Kit Design Flexibility

The standard range of Met-Kit plans can be modified and additions made to suit your individual requirements. Using our unique **Online Design Program** you can mirror reverse the plan, alter the depth, change the roof line, add a garage or carport, add verandahs, change windows, increase ceiling height, maybe add an alfresco entertaining area or portico and choose your exterior cladding.

See what you can change and get an instant online quote... try it, it's easy and it's fun.
www.metkithomes.com.au



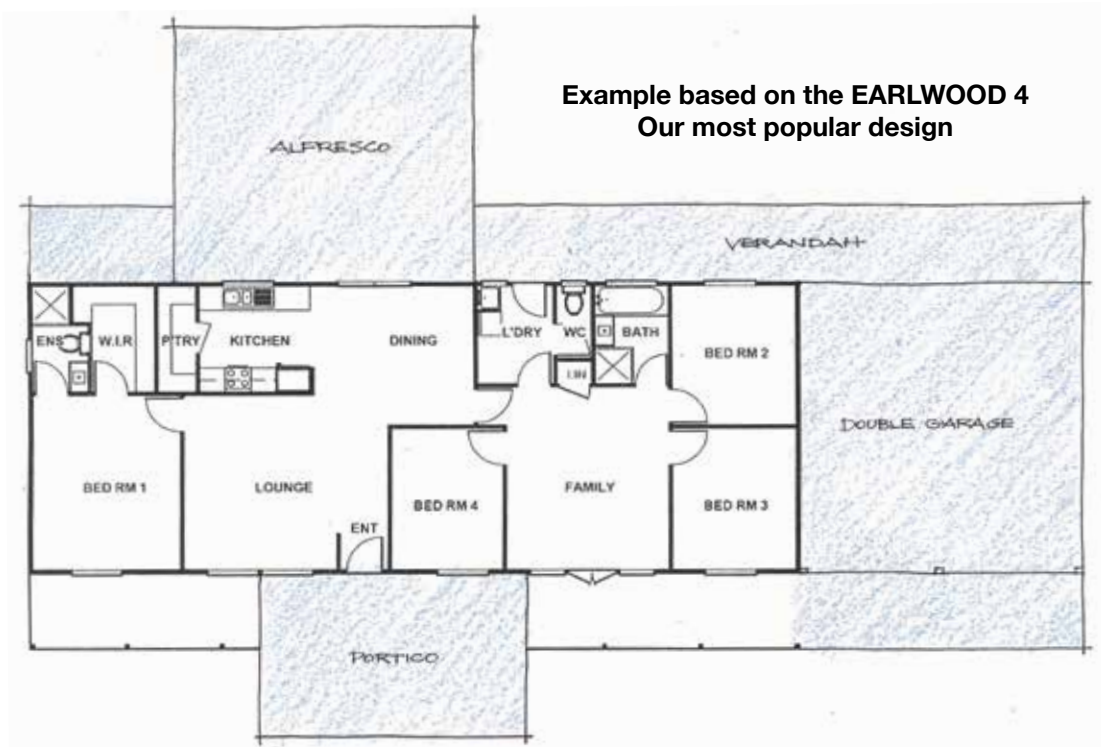
Standard plans

The series of designs shown in this brochure are based on standard floor plans and include full length 1.8m wide front verandahs.



Customise your home

Many other exterior and interior variations and options are also available to add your personal touches to decor, fittings and finishes. Find out more ... talk to one of our Housing Design Consultants to discuss your specific requirements ... 1800 024 912



Example based on the EARLWOOD 4
Our most popular design



Cover photo shows the Hunter 3 with optional upgrades.
• 2.55m ceilings • Split verandah • Gable end overhang • Hardi-lock Newport cladding with external architraves



The Hastings **3 BEDROOM**



The Forbes **3 BEDROOM**



The Earlwood
4 BEDROOM



The Entertainer
5/6 BEDROOM

CONTENTS

- Hastings 3.....page 4
- Forest 3.....page 5
- Hunter 3.....page 6
- Greenway 3...page 7
- Argyle 3.....page 8
- Springvale 3...page 9
- Forbes 3.....page 10
- Mitchell 4.....page 11
- Gordon 4.....page 12
- Sandford 4.....page 13
- Earlwood 4....page 14
- Sandford 5.....page 15
- Daintree 5.....page 16
- Entertainer....page 17

HASTINGS 3

A great country weekender

FLOOR AREA = 98.3 sq m

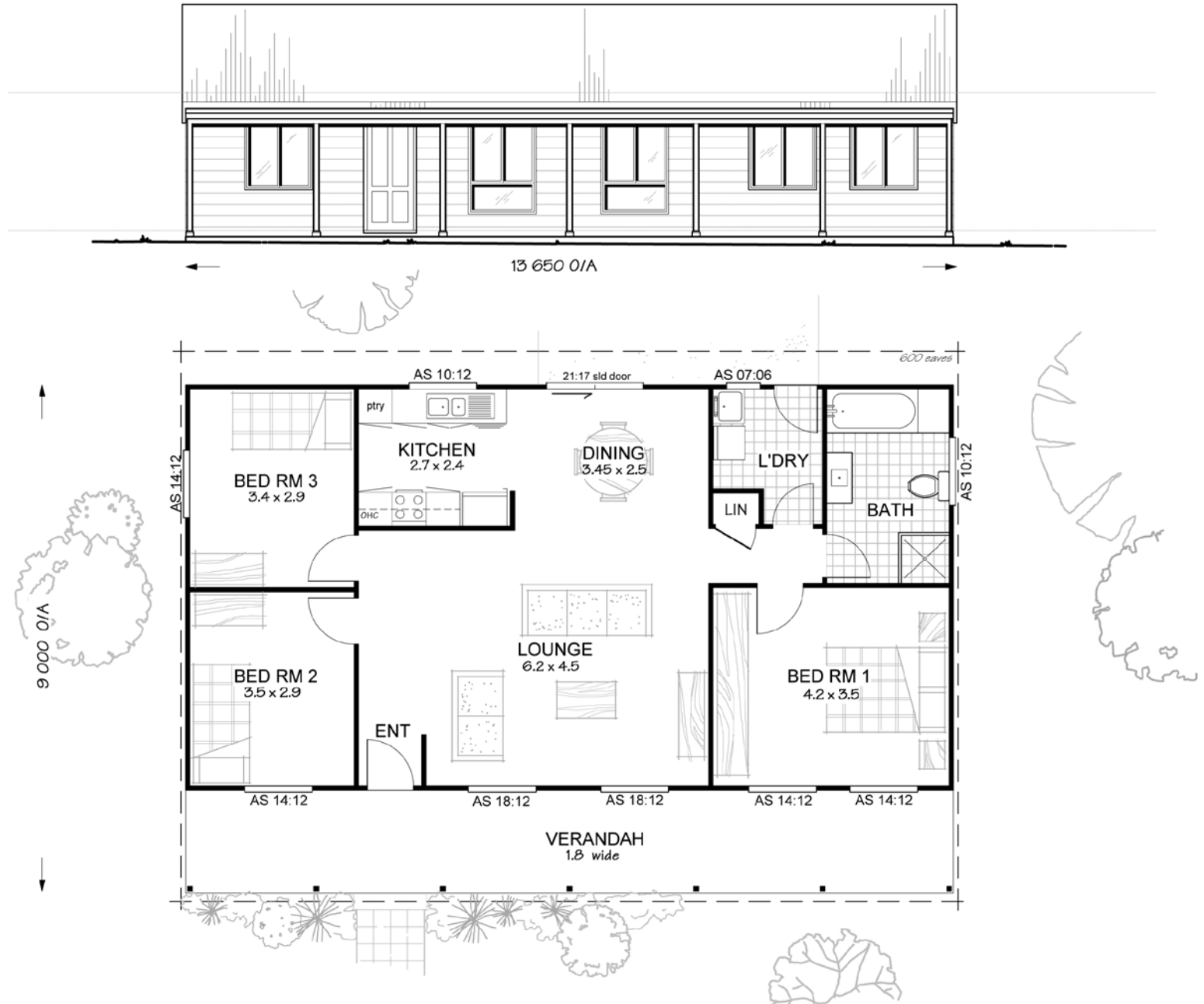
UNDER ROOF AREA = 135.1 sq m



FOREST 3

Roomy layout with separate master bedroom.

FLOOR AREA = 98.3 sq m
UNDER ROOF AREA = 135.1 sq m

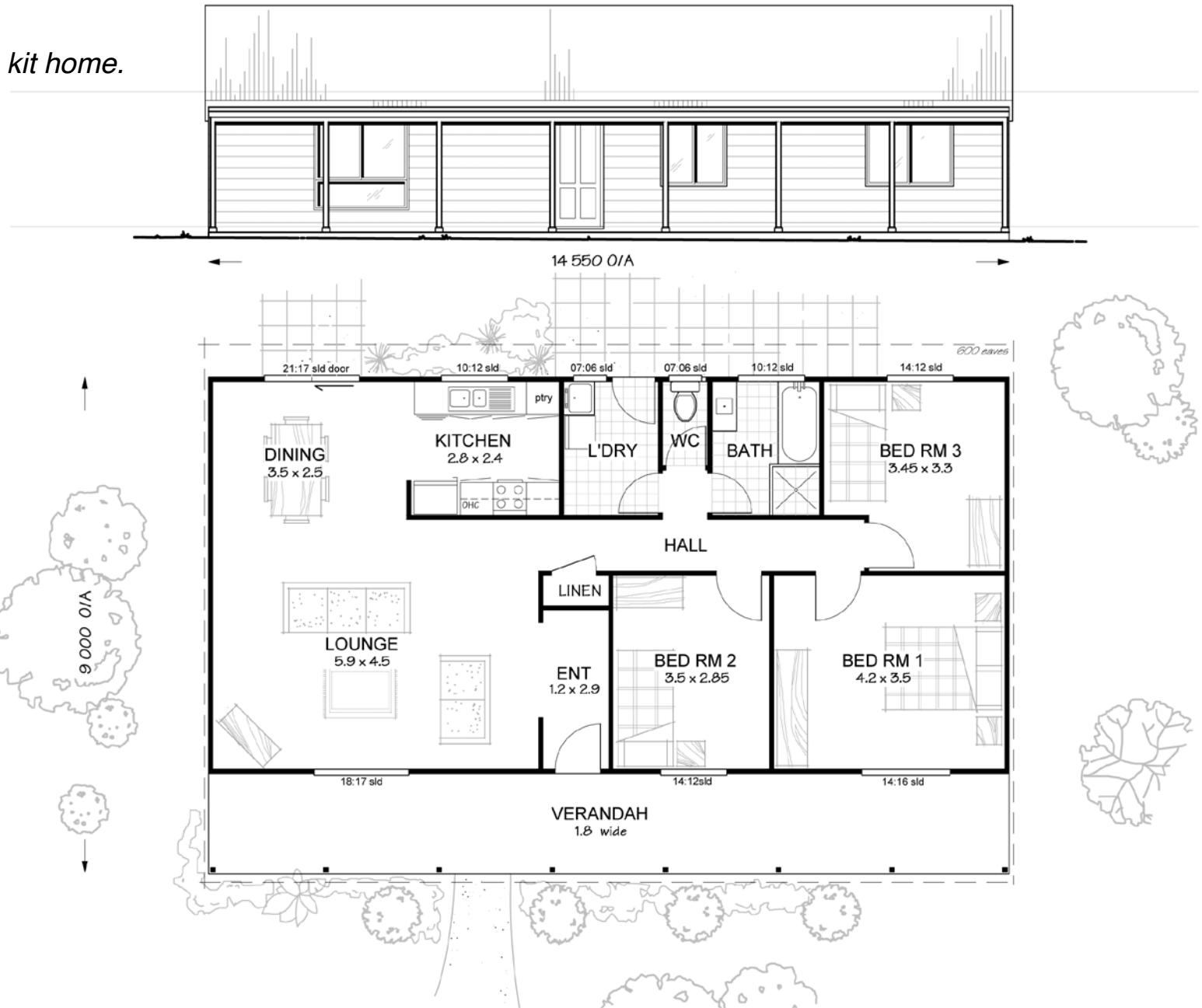


HUNTER 3

Timeless appeal, 3 bedroom kit home.

FLOOR AREA = 104.8 sq m

UNDER ROOF AREA = 144.3 sq m



GREENWAY 3

Comfortable family living.

FLOOR AREA = 104.8 sq m

UNDER ROOF AREA = 144.0 sq m



ARGYLE 3

Very practical design.

FLOOR AREA = 117.8 sq m

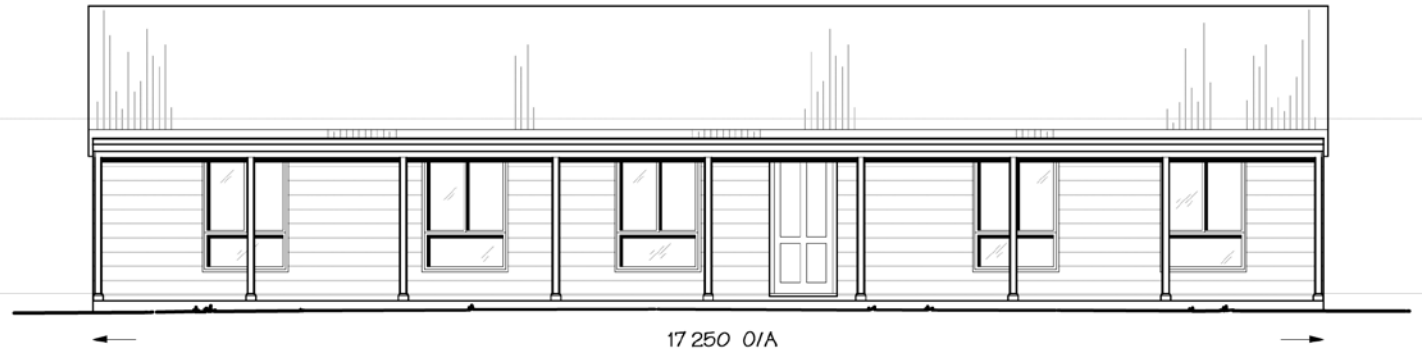
UNDER ROOF AREA = 161.5 sq m



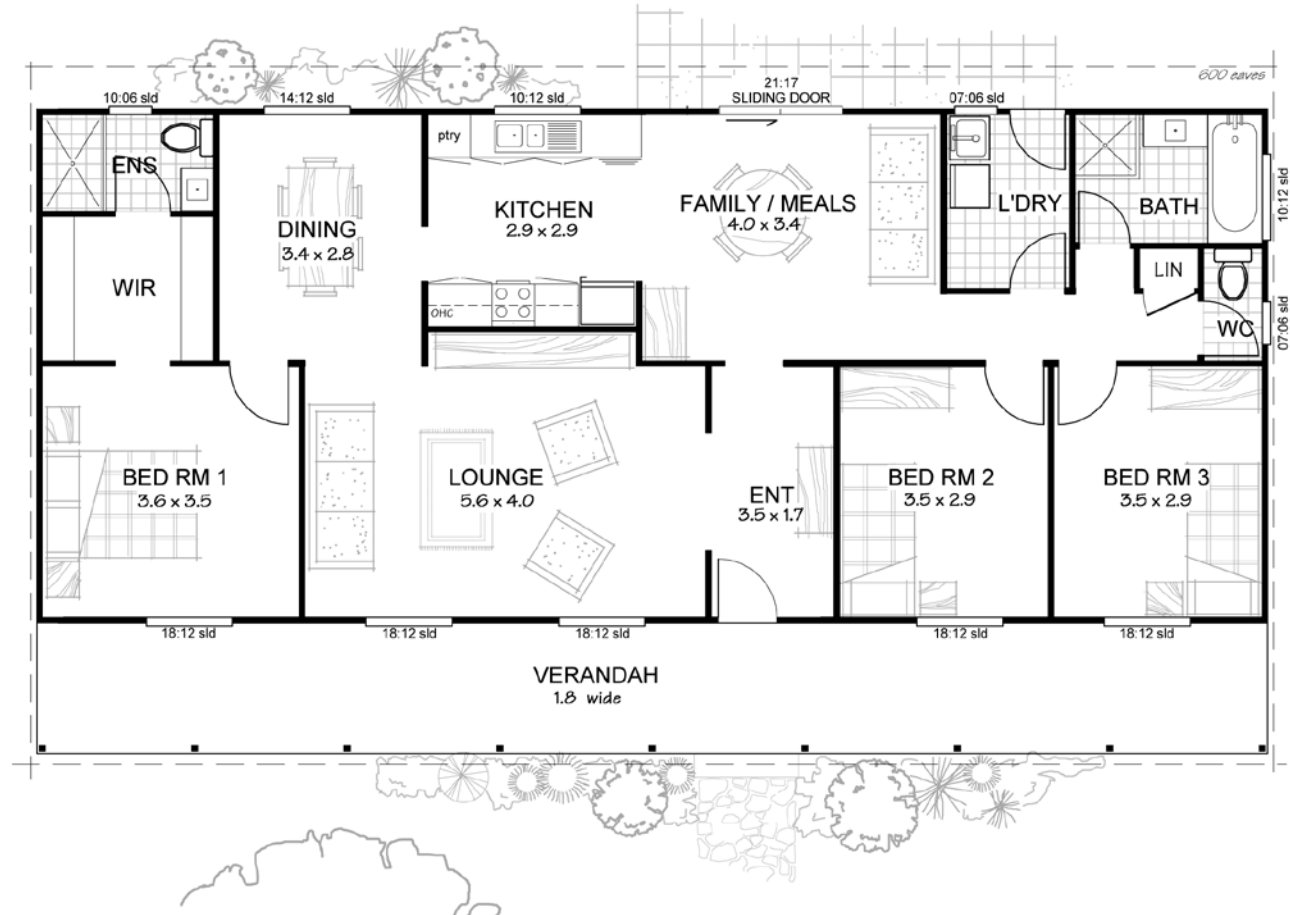
SPRINGVALE 3

Popular dual living design with plenty of space.

FLOOR AREA = 124.2 sq m
 UNDER ROOF AREA = 170.3 sq m



9 000 O/A

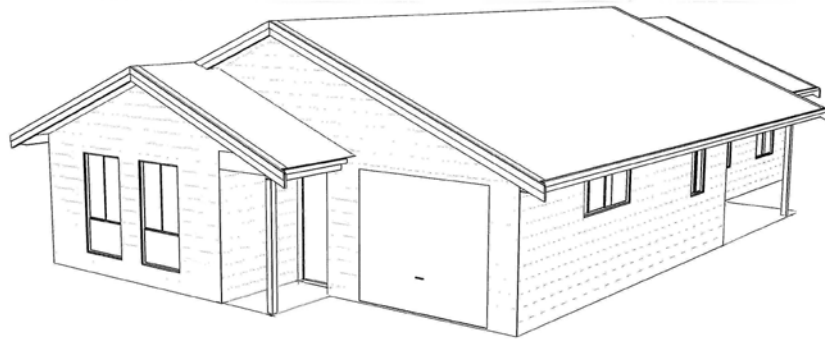


FORBES 3

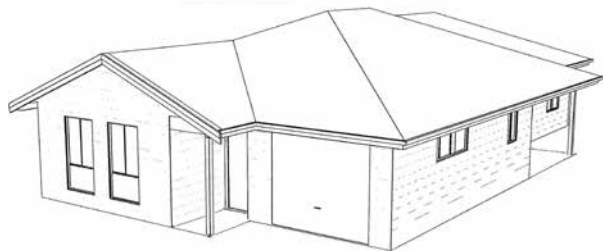
A design for narrow blocks.

FLOOR AREA = 137 sq m

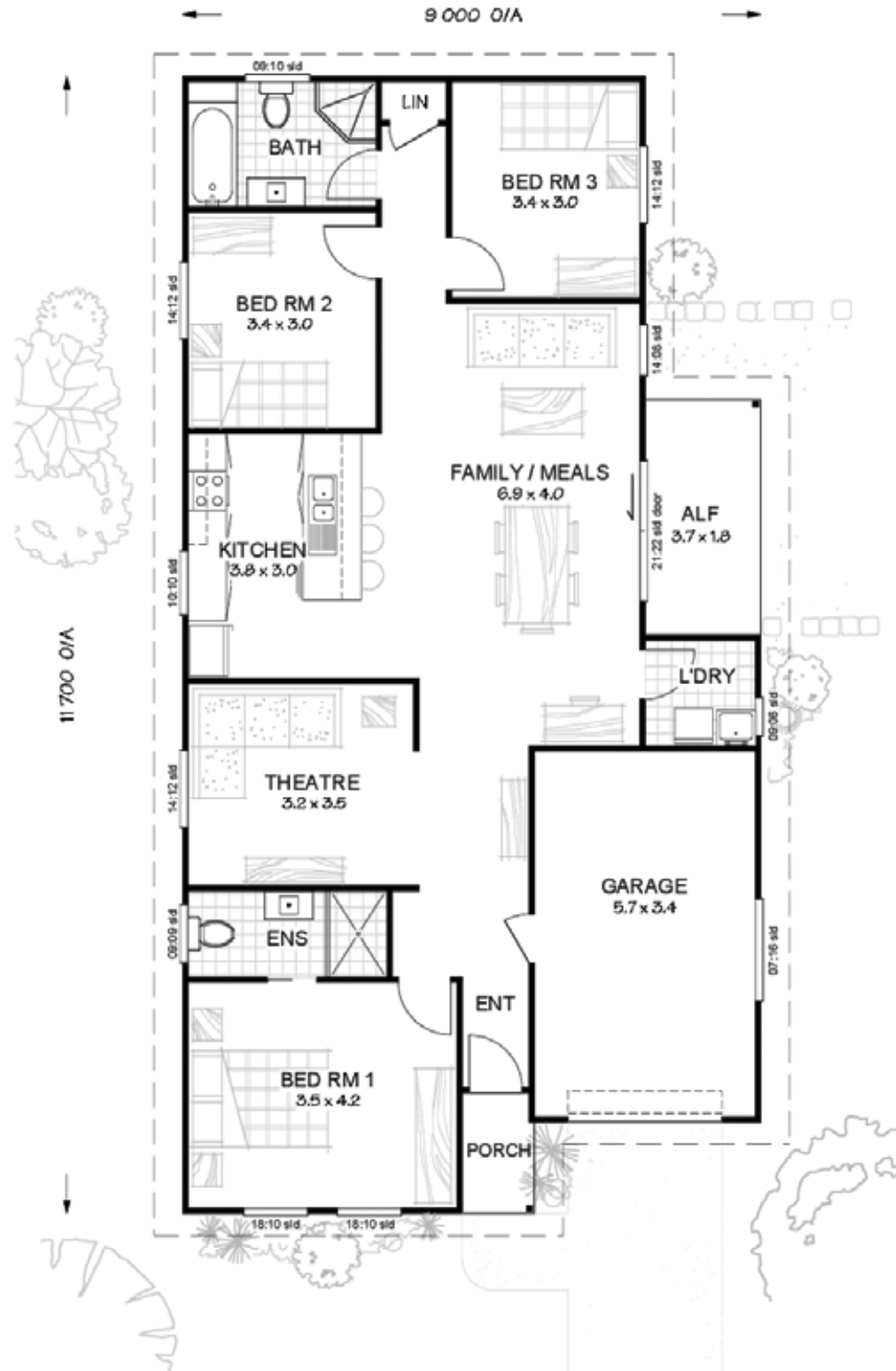
UNDER ROOF AREA = 177 sq m



Gable Roof



Optional Hip Roof



MITCHELL 4

Compact family home. Great value.

FLOOR AREA = 104.8 sq m

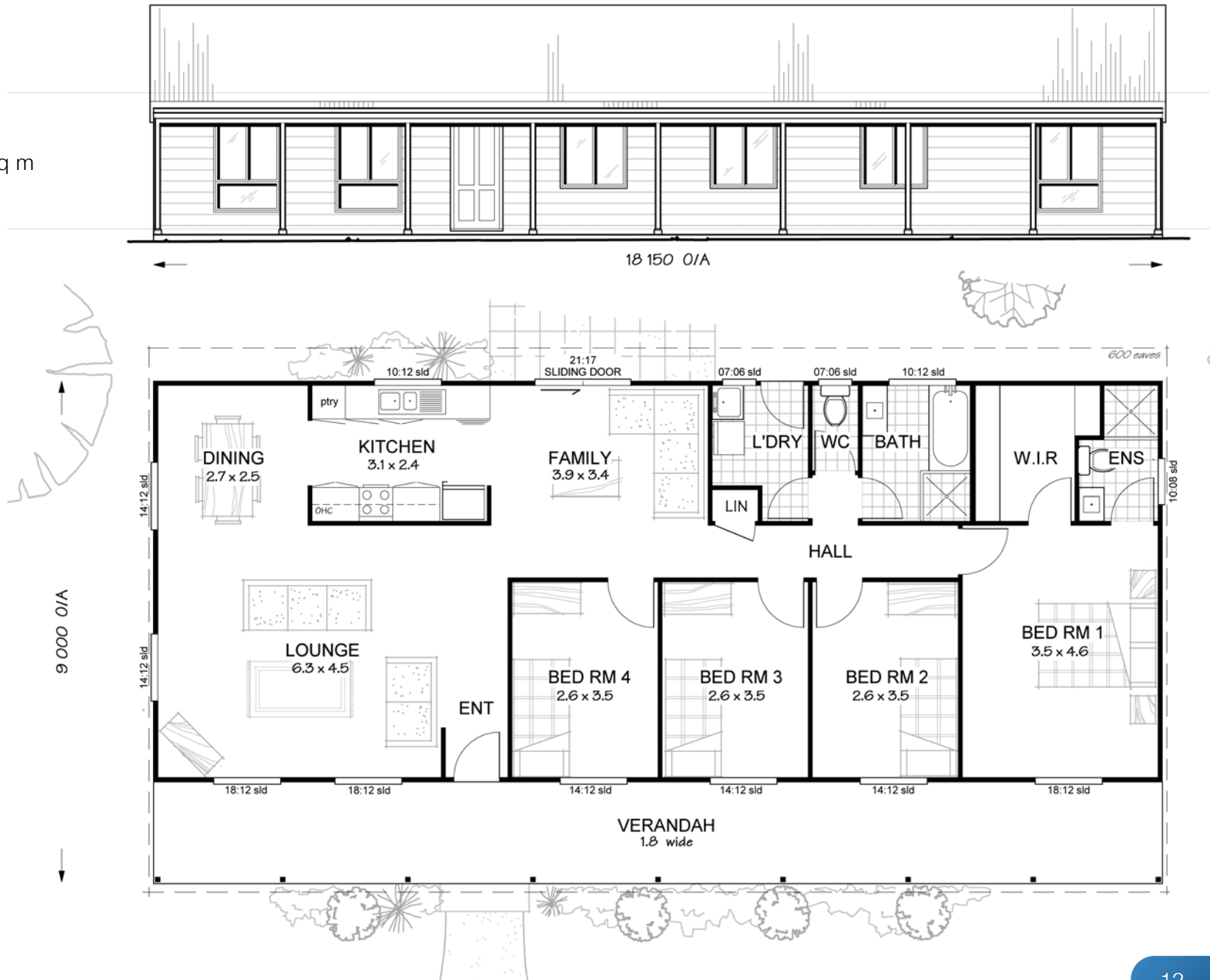
UNDER ROOF AREA = 144.0 sq m



GORDON 4

*Traditional layout,
timeless appeal.*

FLOOR AREA = 130.7 sq m
UNDER ROOF AREA = 179.0 sq m



SANDFORD 4

Casual family living at its best.

FLOOR AREA = 130.7 sq m

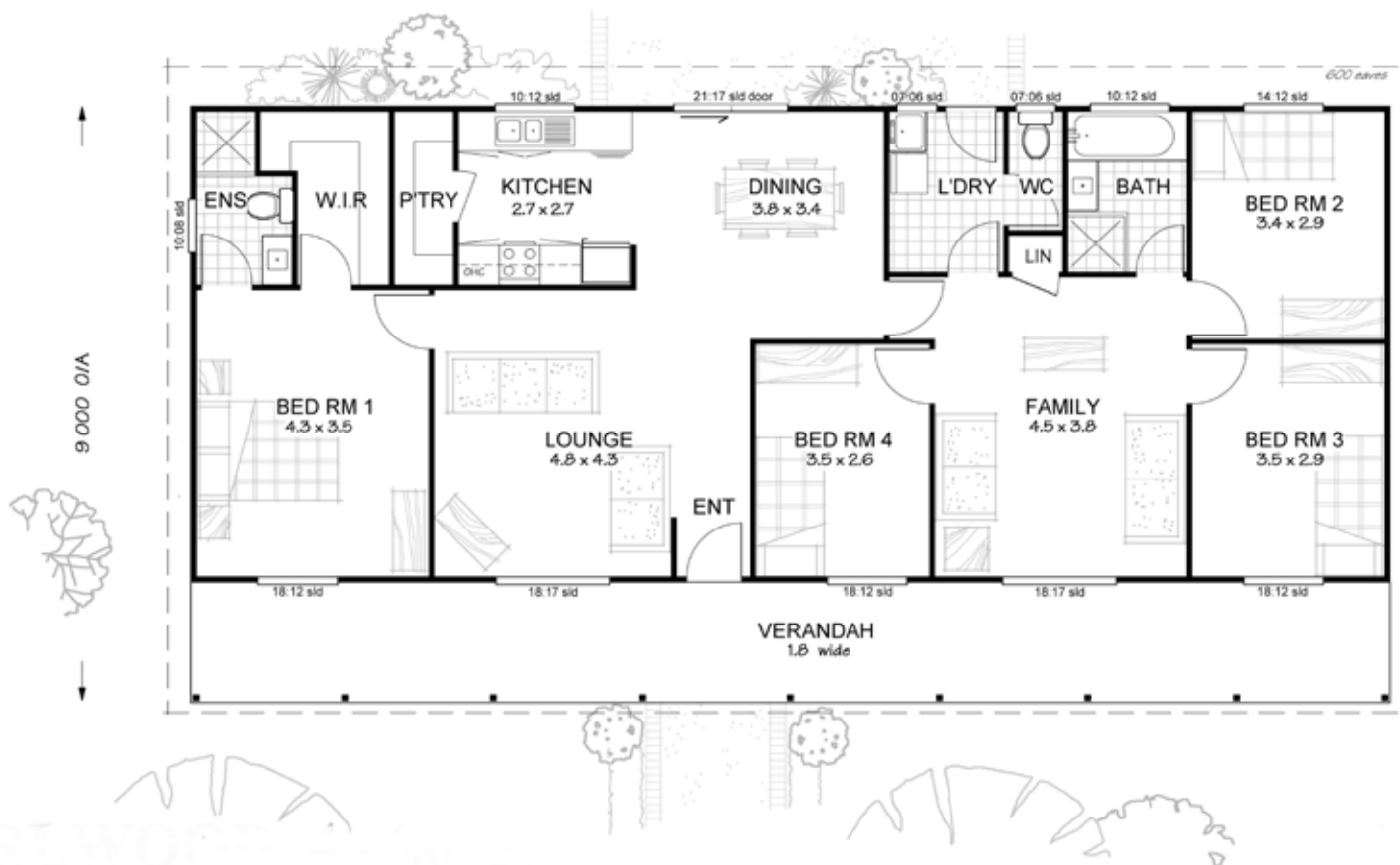
UNDER ROOF AREA = 179.0 sq m



EARLWOOD 4

Our Most Popular Design

FLOOR AREA = 130.7 sq m
UNDER ROOF AREA = 179.0 sq m

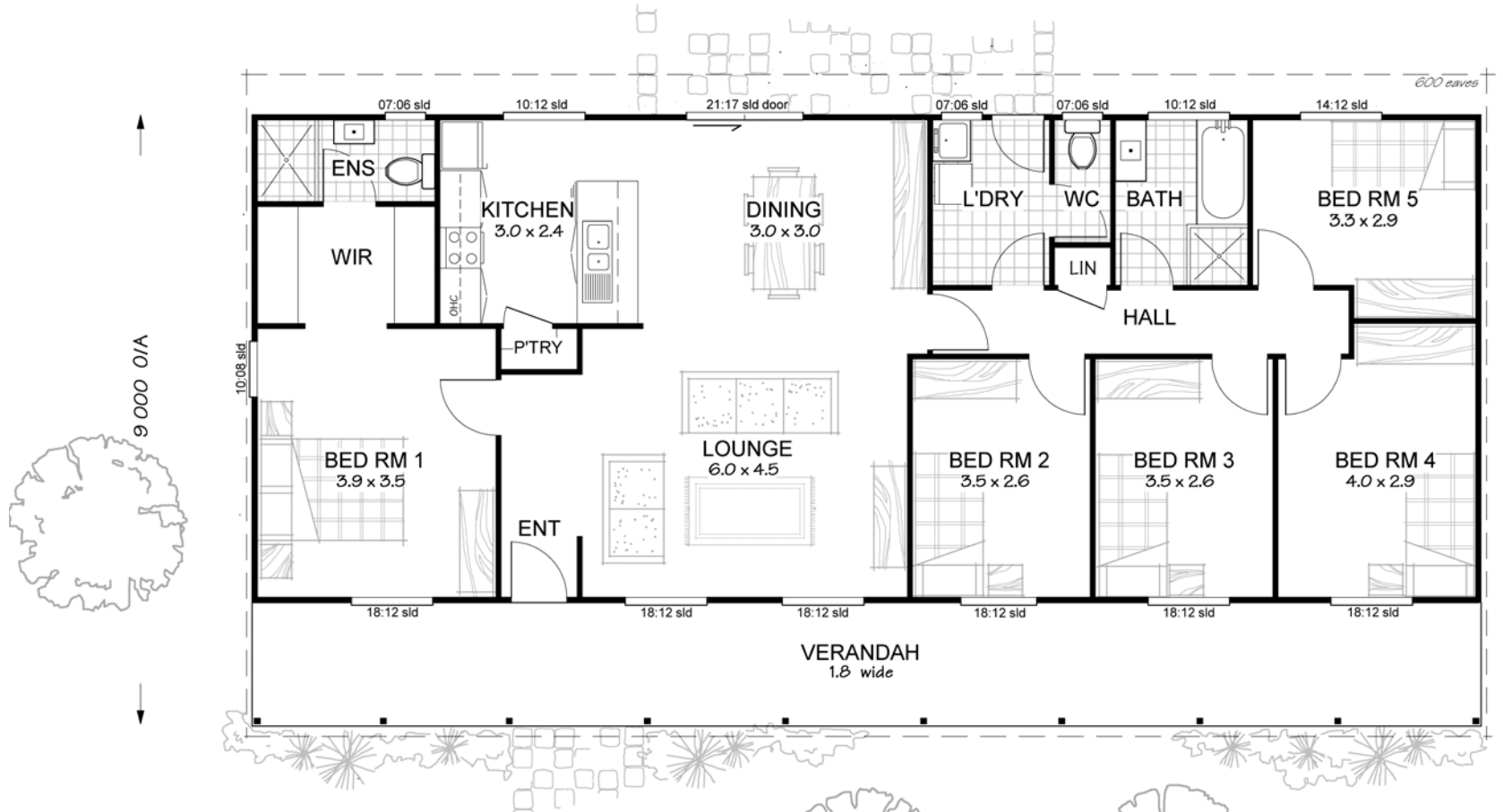
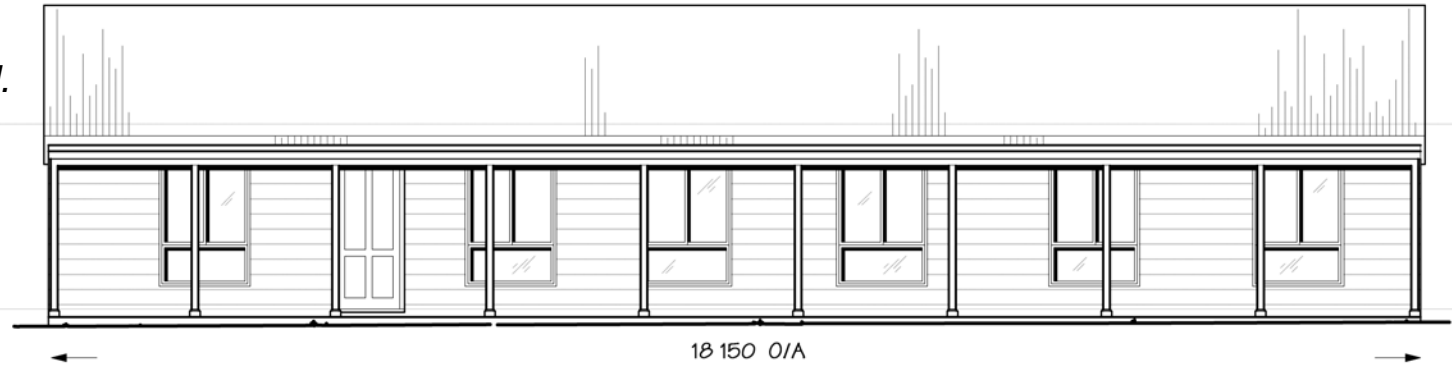


SANDFORD 5

Best value 5 bedroom design around.

FLOOR AREA = 130.7 sq m

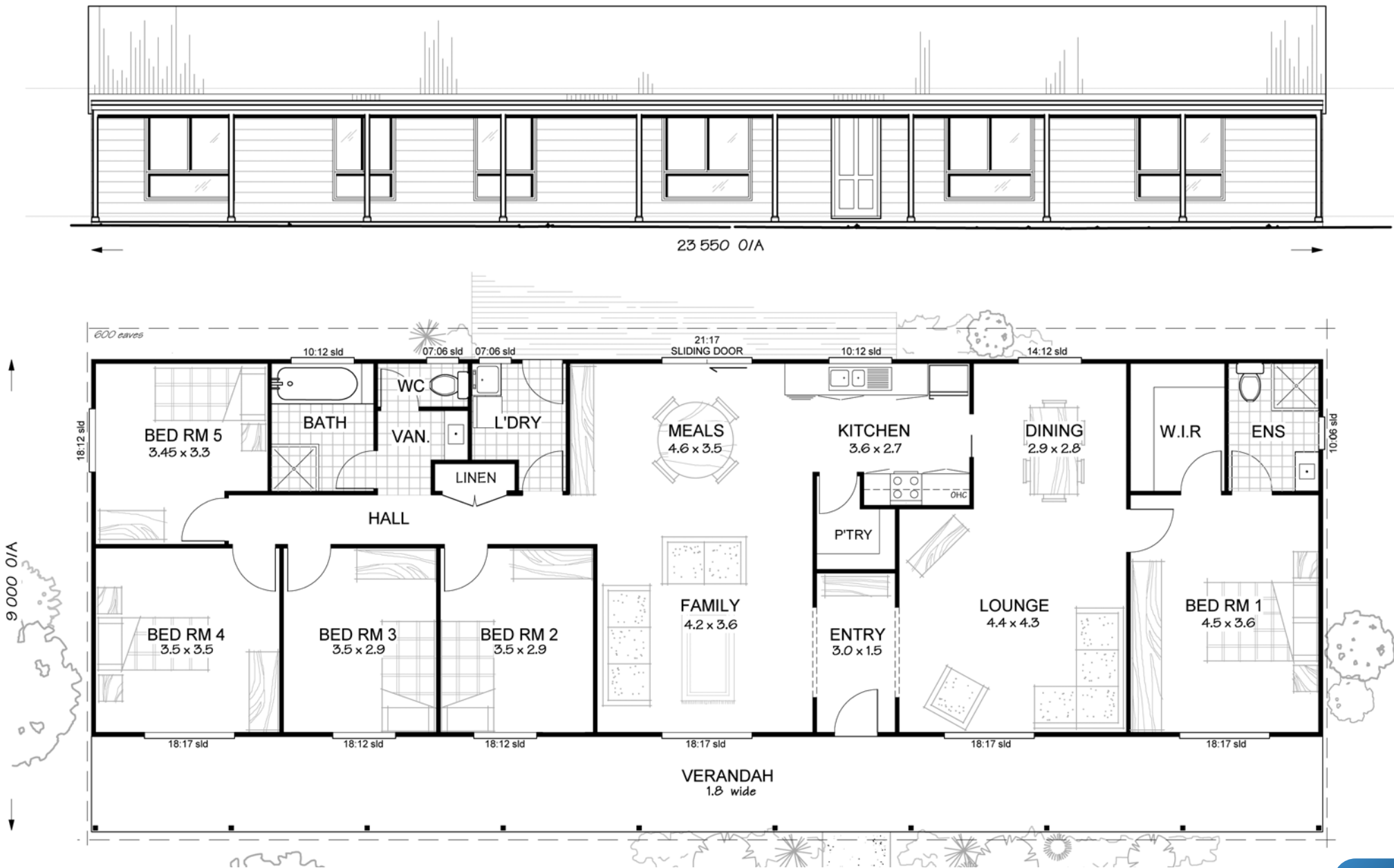
UNDER ROOF AREA = 179.0 sq m



DAINTREE 5

*Fantastic accommodation
with dual living.*

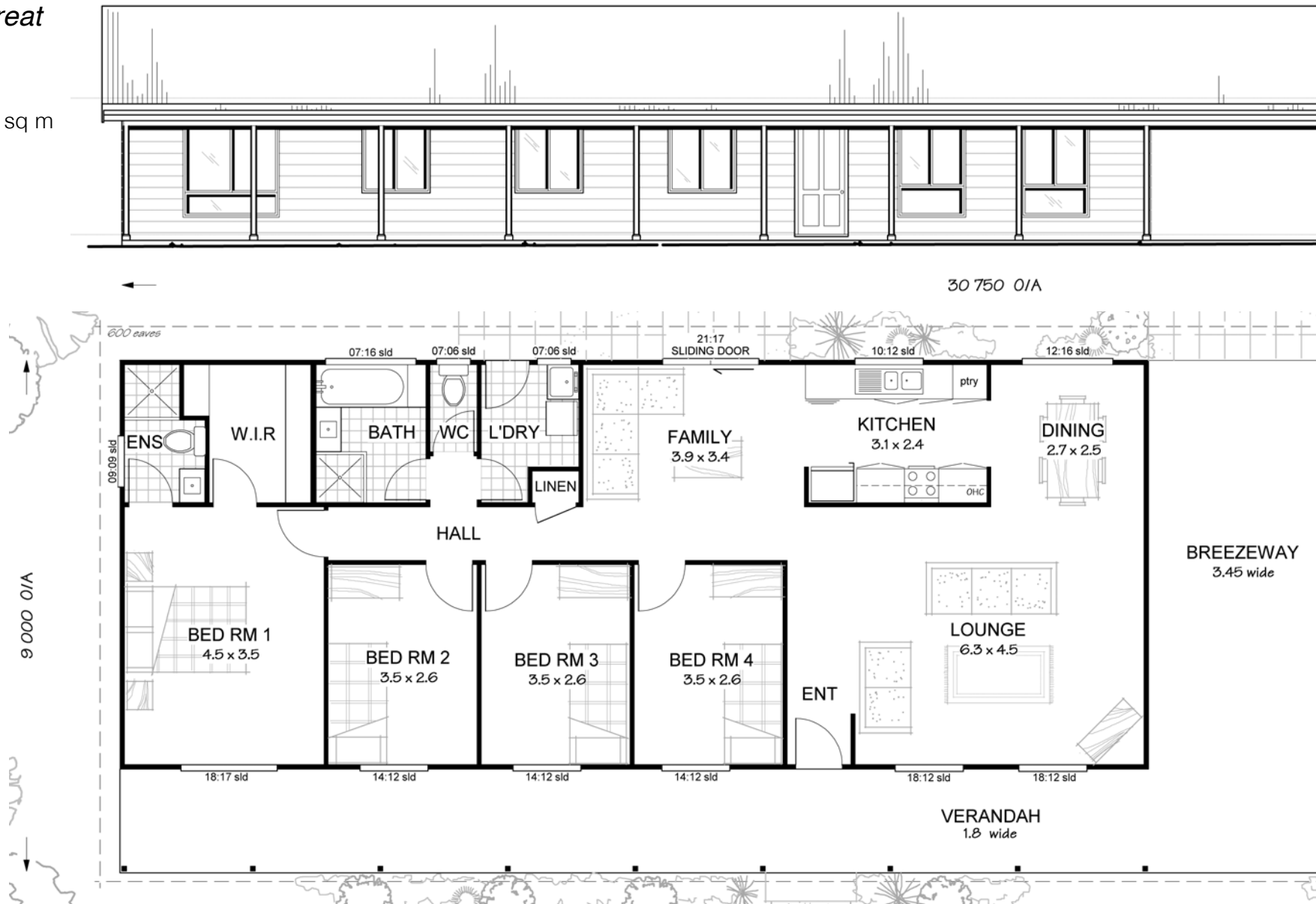
FLOOR AREA = 169.8 sq m
UNDER ROOF AREA = 232.0 sq m

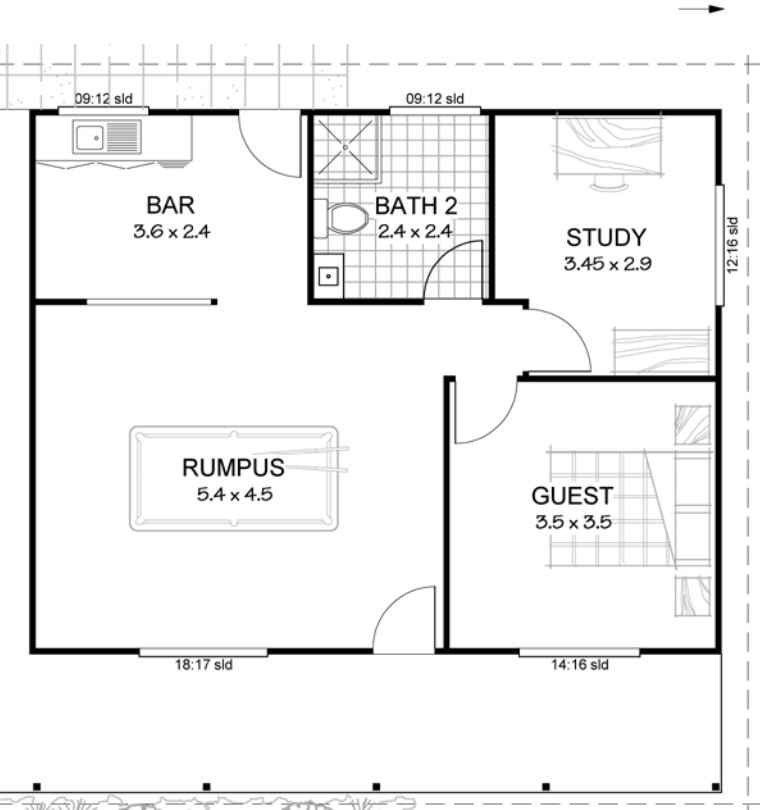


THE ENTERTAINER

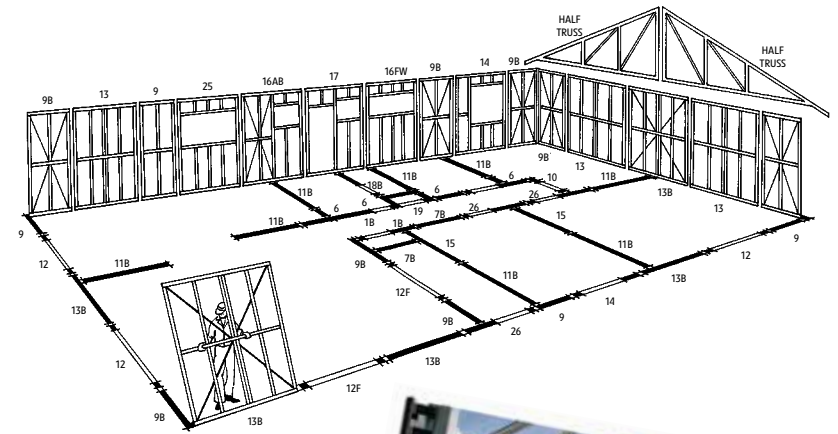
Dual living, teenage retreat
or great B&B.

FLOOR AREA = 196.6 sq m
UNDER ROOF AREA = 307.6 sq m

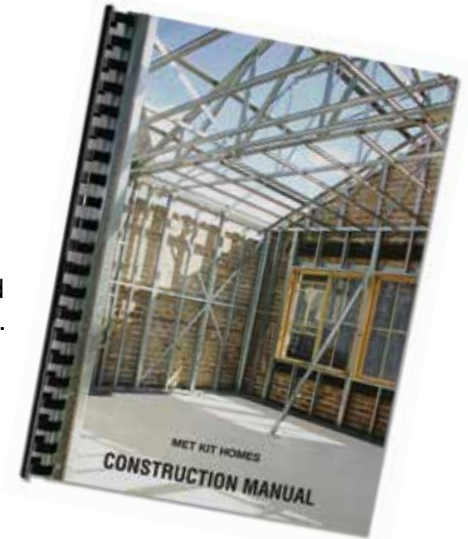




Met-Kit simply 'building by numbers'



The Met-Kit modular system makes home building simple. Wall and roof trusses are factory assembled, ready to be bolted together. You simply start at one corner and fix one panel to the next until complete. Panels are numbered and correspond to a framing plan, so you just follow the plan, you can't go wrong. A well documented, personalised construction manual is supplied with easy to follow, step by step instructions and diagrams. All holes, including provision for plumbing and electrical wiring are pre-punched to make it even easier. Modular wall panels are made to a convenient size that are easy for one person to handle. This saves the cost of hiring outside help or cranes – a very important consideration if you are building out of town. The roof trusses simply bolt together and doors and windows are pre-assembled, ready to fit into wall frame openings. Hardiplank exterior wall panelling and Colorbond roof sheeting are easily fixed using self drilling screws.



Met-Kit is a true Kit Home.



MET-KIT[®]
BUDGET KIT HOMES
www.metkithomes.com

SYDNEY

113-115 Russell Street, Emu Plains
 PO Box 290 Penrith NSW 2751
(02) 4735 4377

MELBOURNE

259 Canterbury Road, Bayswater North
 PO Box 104 Bayswater VIC 3153
(03) 9720 1222

BRISBANE

67 Morayfield Road, Caboolture
 PO Box 1078 Caboolture QLD 4510
(07) 5495 4070

CANBERRA

Post: Pall Kit Homes
 PO Box 6245 O'Connor ACT 2602
0414 508 864